

# KAGAWA ART TRAVEL✈

Islands. Nature. Culture. ART.



## Setouchi Triennale 2019

Exhibition period

Spring ("New Meeting Spring") | April 26 (Fri.) – May 26 (Sun.), 2019, 31 days

Summer ("Get Together Summer") | July 19 (Fri.) – August 25 (Sun.), 2019, 38 days

Autumn ("Explore Autumn") | September 28 (Sat.) – November 4 (Mon.), 2019, 38 days



Yayoi Kusama, "Red Pumpkin" (2006). Located at Miyanourako Ryokuchi, Naoshima.

かかやぐけん、かかわけん。

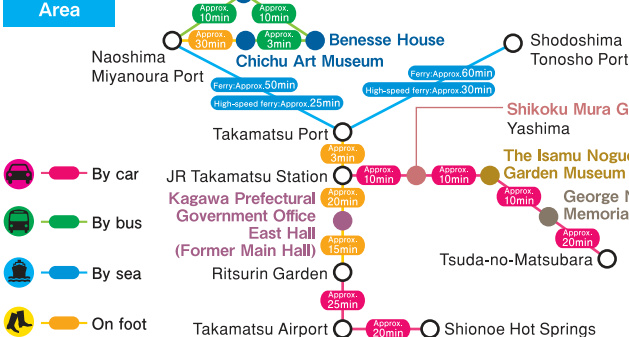
香川県

## Sightseeing & Artworks Map

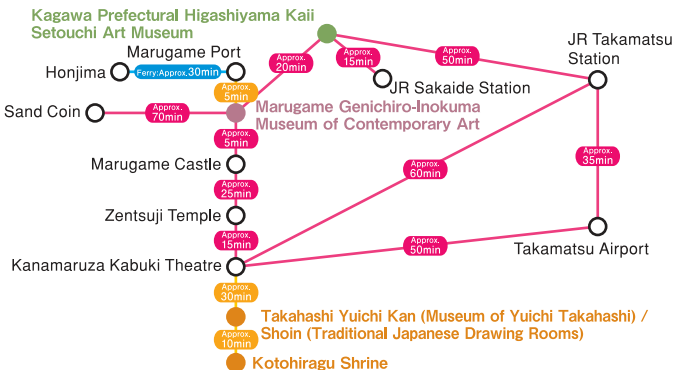


## Approximate travel time

### Takamatsu Area



### Marugame Area



※This information is relevant to major national and prefectural roads, and may change dependent on traffic conditions.



## Access to Kagawa Prefecture



### By plane

Tokyo (Narita) = (Approx. 1 hr. 20 min.) = Takamatsu  
Tokyo (Narita) = (Approx. 1 hr. 20 min.) = Takamatsu  
Okinawa (Naha) = (Approx. 1 hr. 50 min.) = Takamatsu  
Seoul = (Approx. 1 hr. 40 min.) = Takamatsu  
Shanghai = (Approx. 2 hrs.) = Takamatsu  
Taipei = (Approx. 2 hrs. 40 min.) = Takamatsu  
Hong Kong = (Approx. 3 hrs. 40 min.) = Takamatsu

### By JR Train

Tokyo = (Approx. 3 hrs and 30 min) = Okayama = (Approx. 1 hr) = Takamatsu  
Shin-Osaka = (Approx. 45 min) = Okayama = (Approx. 1 hr) = Takamatsu  
Hakata = (Approx. 1 hr and 50 min) = Okayama (Approx. 1 hr) = Takamatsu  
© JR Takamatsu Station TEL: 087-825-1702

### Access from Takamatsu Airport

Takamatsu Airport = (Approx. 40 min) = JR Takamatsu Station  
© Kotoden Bus TEL: 087-821-3033  
Takamatsu Airport = (Approx. 50 min) = JR Kotohira Station  
© Kinku Bus TEL: 0877-75-2920  
Takamatsu Airport = (Approx. 1 hr and 10 min) = JR Marugame Station  
Takamatsu Airport = (Approx. 50 min) = JR Sakaide Station  
© Kotosan Bus TEL: 0877-22-9191

### By ferry

Kobe = (Approx. 4 hrs) = Takamatsu  
© Jumbo Ferry TEL: 078-327-3333 (Kobe)

### By highway bus

Tokyo = (Approx. 10 hrs) = Takamatsu  
Nagoya = (Approx. 7 hrs) = Takamatsu  
Kyoto = (Approx. 3 hrs and 40 min) = Takamatsu  
Osaka = (Approx. 3 hrs and 30 min) = Takamatsu  
Kobe = (Approx. 3 hrs) = Takamatsu  
Hiroshima = (Approx. 3 hrs and 20 min) = Takamatsu  
Fukuoka = (Approx. 10 hrs) = Takamatsu  
© JR Shikoku Bus TEL: 087-825-1657  
© Shikoku Kousoku Bus TEL: 087-881-8419  
© Foot Bus TEL: 087-874-7777

※Times are estimates and may vary dependent on traffic.  
※You cannot leave the highway from the Shikoku side of the Sakaide-Kita IC.

### Contact

Kagawa Prefecture Tourism Association

4-1-10, Bancho, Takamatsu City, Kagawa 760-8570 TEL: 087-832-3377

Kagawa Prefecture Tourism Association Official Website  
"Sightseeing Guide of Kagawa Prefecture"

● This information is current as of May 2018, and subject to change afterwards.





## Guide to Naoshima



Chichu Art Museum Photo: Mitsumasa Fujitsuka

## Chichu Art Museum

The Chichu Art Museum was constructed in 2004 as a "site for rethinking the relationship between mankind and nature". Located on the south side of Naoshima Island, the building was designed by Tadao Ando and houses works by Claude Monet, James Turrell, and Walter De Maria on permanent display. The building's design was developed from discussions between architect Tadao Ando and the artists. The entire museum in itself is a huge site-specific artwork and attracts many visitors.



Walter De Maria, "Time/Timeless/No Time". Photo: Michael Kellough

Naoshima-cho 3449-1, Kagawa-gun, Kagawa 761-3110. Tel: 087-892-3755  
 Open: 10:00–18:00 (Entrance closes at 17:00) March 1 – September 30  
 10:00–17:00 (Entrance closes at 16:00) October 1 – final day of February  
 Closed: Mondays. ※When Monday is a national holiday, the facilities will stay open and close the subsequent day. Also, the facilities close for occasional maintenance.  
 Admission: ¥2,060 (free for visitors 15 years old and younger) ¥10,300 (Year-Long Passport)  
 Space is limited, online reservation is recommended.  
 Access: Take a Naoshima town bus toward "Tsutsujiso" from "Miyanourako" bus station and get off at the "Tsutsujiso" bus stop. Transfer to Benesse Art Site Naoshima shuttle bus headed to the "Chichu Art Museum" bus stop and get off at the final stop. (Approx. 30 minutes) .



Art House Project/Kadoya Photo: Norihiro Ueno

Honmura, Naoshima-cho, Kagawa-gun, Kagawa 761-3110  
 Tel: 087-892-3223 (Benesse House)  
 Open: 10:00 - 16:30  
 Closed: Mondays ※ If Monday is a national holiday, it opens on Monday and closes on Tuesday.  
 Please note that it is occasionally closed for maintenance.  
 Admission: ¥1,030 (Multi-Site Ticket for six houses excluding "Kinza").  
 (Free for Children 15 and under)

※ Entry to "Kinza" requires a reservation and a separate admission fee of ¥510.  
 Access: Take a Naoshima town bus towards "Tsutsujiso" from "Miyanourako" bus station and get off at "Nokiyomae" bus stop. (Approx. 10 minutes)

## Art House Project

Various empty houses in a residential area have been turned into works of art. Due to its location, both visitors and locals are able to enjoy the spontaneous interaction that unfold within this shared living space.



Art House Project/Kadoya/Tatsuo Miyajima/ Sea of Time'98 Photo: Norihiro Ueno



Naoshima Bath" I ♥ 湯"Shinro Ohtake Photo: Osamu Watanabe

## Naoshima Bath" I ♥ 湯"

This art facility, created by Shinro Ohtake, also functions as a useable public bath. The exterior and the interior, along with the baths, the tiles decorating the walls, the mosaics, and even the toilet fittings, all work to reflect the creative world of Shinro Ohtake. The facility is a place of relaxation for Naoshima residents as well as a place for cultural exchange between locals and visitors, both domestic and international.



Benesse House Photo: Tadasu Yamamoto

## Benesse House

A facility that combines the roles of an art museum and a hotel. Based on the concept of "a symbiosis of nature, architecture, and art" it was designed by architect Tadao Ando and opened in 1992. Artworks are displayed not only in the display spaces, but also installed all around inside the facilities and sprinkled around the surrounding shoreline and groves.

Gotanji, Naoshima-cho, Kagawa-gun, Kagawa 761-3110. Tel: 087-892-3223

Open: 8:00 - 21:00 (Last admittance: 20:00)

Closed: N/A (Always open, except the maintenance period)

Admission: ¥1,030 (Free for Children 15 and under)

Access: At the "Miyauro Port" Miyauro Port bus stop, board the Naoshima Town Bus on the "to Tsutsujiso" side. At the "Tsutsujiso" bus stop, transfer to a shuttle bus within the grounds and disembark at the "Benesse House Museum" bus stop (approx. 20 min.).

## Lee Ufan Museum

This museum is a collaborative creation by artist Lee Ufan and architect Tadao Ando. Located in a valley surrounded by hills and the ocean, the museum harmonizes nature, architecture, and art, inviting to quiet contemplation, in a society overflowing with material stimulation.



Lee Ufan Museum Photo: Tadasu Yamamoto

1390, Aza-kuraura, Naoshima-cho, Kagawa-gun, Kagawa 761-3110

Tel: 087-892-3754 (Fukutake Foundation)

Open: 10:00 - 18:00 (Last admittance: 17:30) / March 1 - September 30

10:00 - 17:00 (Last admittance: 16:30) / October 1 - Last day of February

Closed: Mondays ※ If Monday is a national holiday, the museum opens on Monday and closes on Tuesday. Please note that the museum is occasionally closed for maintenance also.

Admission: ¥1,030 (Free for Children 15 and under)

Access: Take a Naoshima town bus toward "Tsutsujiso" from "Miyanourako" bus station and get off at the "Tsutsujiso" bus stop. Transfer to Benesse Art Site Naoshima shuttle bus and get off at "Lee Ufan Museum" (Approx. 25 minutes) .



ANDO MUSEUM Photo: Yoshihiro Asada

## ANDO MUSEUM

This museum showcasing the work of architect Tadao Ando was built within a roughly 100-year-old traditional wooden house. With Ando's trademark juxtaposition of contrasting elements, such as wood and concrete, or light and shadow, we can feel the condensed essence of his architectural style even in this small space. Photographs, sketches, and models provide information on the history of Naoshima Island and the various buildings by Tadao Ando.

736-2, Naoshima-cho, Kagawa-gun, Kagawa 761-3110

Tel: 087-892-3754 (Fukutake Foundation)

Open: 10:00 - 16:30 (Last admittance: 16:00)

Closed: Mondays ※If Monday is a national holiday, the museum opens on Monday and closes on Tuesday. Please note that the museum is occasionally closed for maintenance also.

Admission: ¥510 (Free for Children 15 and under)

Access: Take a Naoshima town bus toward "Tsutsujiso" from "Miyanourako" bus station and get off at "Nokiyomae" bus stop (approx. 10 minutes). From there walk for three minutes.



2252-2, Naoshima-cho, Kagawa-gun, Kagawa 761-3110

Tel: 087-892-2626 (NPO Town-Naoshima Tourism Association)

Open: 13:00–21:00 (Entrance closes at 20:30)

Closed: Mondays

※ If Monday is a national holiday, the facility opens on Monday and closes on Tuesday. Please note that the public bath is occasionally closed for maintenance also.

Admission: ¥650 (¥310 for Naoshima island residents),

¥300 for visitors 15 years old and younger (free for children under 3 years old)

Access: 2 minute walk from Miyanoura Port.



## Guide to Teshima



Teshima Art Museum Photo: Noboru Morikawa

### Teshima Art Museum

The Teshima Art Museum located on a hill in the karato-oka area of Teshima and overlooking the Seto Inland Sea, is a museum by artist Rei Naito, and architect Ryue Nishizawa. The surrounding idle rice terraces were restored in collaboration with local residents. The installed museum building, which resembles a water droplet at the corner of the large rice terrace, is a concrete shell structure without a single pillar. It is 4.5 meters high at the most and 40 by 60 meters wide. Two openings in the ceiling of the shell invite wind, sounds, and light from the surroundings directly into the building producing a space where nature, art and architecture join in organic harmony. In the interior space, water continuously springs from the floor throughout the day. The scene in the museum shows an infinite range of expressions, along with the changing seasons and passage of time.



"Matrix" Rei Naito Photo: Noboru Morikawa

607, Teshimakarato, Tonosho-cho, Shozu-gun, Kagawa 761-4662 Tel: 0879-68-3555  
Open: 10:00–17:00 (Entrance closes at 16:30) / March 1 – October 31  
10:00–16:00 (Entrance closes at 15:30) / November 1 –final day of February  
Closed: Tuesdays (March 1 – November 30) , Tuesdays & Wednesdays (December 1 – final day of February)  
※ When a closed day falls on a national holiday, the facilities will stay open for the holiday and close the next day.  
※ When Monday is a national holiday, the facilities will stay open on Tuesday and close that Wednesday.  
Admission: ¥1,540 (Free for children 15 and under)  
Access: Take a Tonosho-cho shuttle bus toward "Karato Port" from the "Ieura Port" bus station, and get off at the "Bijutsukan-mae" bus stop (Approx. 15 minutes) .



Teshima Yokoo House Photo: Tadasu Yamamoto

### Teshima Yokoo House

The "Teshima Yokoo House" is a museum by artist Tadanori Yokoo and was created by renovating an old private house located in Teshima Village. Making full use of the house's existing layout, 11 two-dimensional works are displayed in three separate exhibition areas called the "Main House," "Warehouse," and "Outhouse." Installations are also displayed in a stone garden with a pond and a cylindrical tower, his works covering the entire site. This philosophical space is suggestive of themes related to both life and death.

2359, Teshimaieura, Tonosho-cho, Shozu-gun, Kagawa 761-4661  
Open: 10:00–17:00 (Entrance closes at 16:30) / March 1 – October 31  
10:00–16:00 (Entrance closes at 15:30) / November 1 –final day of February  
Closed: Tuesdays (March 1 – November 30) , Tuesdays & Wednesdays (December 1 – final day of February)  
※ When a closed day falls on a national holiday, the facilities will stay open for the holiday and close the next day.  
※ When Monday is a national holiday, the facilities will stay open on Tuesday and close that Wednesday.  
Admission: ¥510 (Free for Children 15 and under)  
Access: About a 5-minute walk from Ieura Port

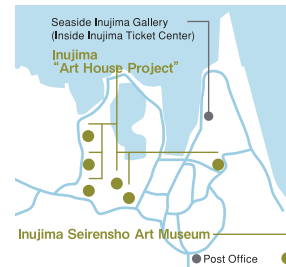
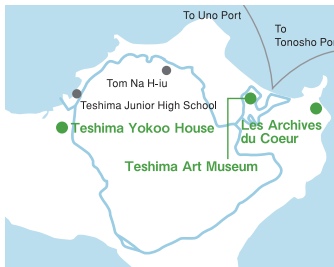


Les Archives du Coeur/Christian Boltanski Photo: Yasuhide Kuge

### Les Archives du Coeur

This small art museum permanently stores sound data of people's heartbeats that artist Christian Boltanski recorded all over the world. We can hear the sounds here in this facility which consists of three rooms titled "Heart Room," "Recording Room," and "Listening Room."

2801-1, Teshimakarato, Tonosho-cho, Shozu-gun, Kagawa 761-4662 Tel: 0879-68-3555 (Teshima Art Museum)  
Open: 10:00–17:00 (Entrance closes at 16:30) / March 1 – October 31  
10:00–16:00 (Entrance closes at 15:30) / November 1 –final day of February  
Closed: Tuesdays (March 1 – November 30) , Tuesdays & Wednesdays (December 1 – final day of February)  
※ When a closed day falls on a national holiday, the facilities will stay open for the holiday and close the next day.  
※ When Monday is a national holiday, the facilities will stay open on Tuesday and close that Wednesday.  
Admission: ¥510 (Free for children 15 and under)  
Extra fee for recording your heartbeats: ¥1,540 (including a CD-booklet)  
Access: About 15-minute walk from "Karato Port"



## Guide to Inujima



Inujima Seirenscho Art Museum Photo: Daichi Ano

### Inujima Seirenscho Art Museum

Once a copper refinery in Inujima, this preserved site has now been rebuilt into the Inujima Seirenscho Art Museum. The concept of the museum lies in "using what exists to create what is to be." The project is attracting attention as a new model of community revitalization based on the ideas of "heritage, architecture, art, and the environment."

327-5, Inujima, Higashi-ku, Okayama City, Okayama 704-8153 Tel: 086-947-1112  
Open: 10:00 - 16:30 (Last admittance: 16:00)  
Closed: Tuesdays (March 1 - November 30) / Tuesdays to Thursdays (December 1 - Last day of February)  
※ If Tuesday is a national holiday, the museum is open on Tuesday and closed on the following day.  
※ If Monday is a national holiday, the museum is open on Tuesday and closed on the following Wednesday.  
Admission: ¥2,060 (Free for Children 15 and under)  
※ Includes the fee for Inujima "Art House Project" and the Seaside Inujima Gallery



Inujima "Art House Project" F-Art House Photo: Takashi Homma

### Inujima "Art House Project"

Following the opening of the Inujima Seirenscho Art Museum in April 2008, a new project within Inujima Village was initiated. Here, artistic director Yuko Hasegawa and architect Kazuyo Sejima, created five galleries along with the "Nakanotani Gazebo," which aims to change and revitalize the island's landscapes.

327-5, Inujima, Higashi-ku, Okayama City, Okayama 704-8153 Tel: 086-947-1112  
Open: 10:00 - 16:30 (Last admittance: 16:00)  
Closed: Tuesdays (March 1 - November 30)  
Tuesdays to Thursdays (December 1 - Last day of February)  
※ If Tuesday is a national holiday, the museum is open on Tuesday and closed on the following day.  
※ If Monday is a national holiday, the museum is open on Tuesday and closed on the following Wednesday.  
Admission: ¥2,060 (free for visitors 15 years old and younger)  
※ Tickets also allow entrance to Inujima Seirenscho Art Museum and Inujima Life Garden



# 02 ART SETOUCHI

## Take an art trip Experience Mother Ocean

In addition to being a beautiful and calm sea, Seto Inland Sea has also served as a main artery connecting the Japan island chain since days of old. The charm of the islands and waters that are home to modern art inspire visitors to look back on our past and also provide a vision of the future. The presence of Setouchi Triennale has lifted the spirits of not only islanders, but many others as well, and has highlighted within our own hearts the long linkage between the ocean and people. "ART SETOUCHI" is the overall name for activities designed to revitalize and rejuvenate the community through art, including holding the "Setouchi Triennale" festival every three years and making art available between those times as well.



Ogijima

"Akinorium" Akinori Matsumoto



Takamatsu Port

Liminal Air-core/Shinji Ohmaki  
photo: Kimito Takahashi



Shodoshima

"Shiomimi-so" Toshimitsu Ito + Kana Kou (Kana Yoshida)  
+ Hiroshima City University, Faculty of Arts  
photo: Yasushi Ichikawa



Honjima

"Bottom Sky" Alexander Ponomarev  
photo: Shintaro Miyawaki



Megijima

"ISLAND THEATRE MEGI" Yoichiro Yoda  
photo: Yasushi Ichikawa



Oshima

"Blue Sky Aquarium" Seizo Tashima  
photo: Kimito Takahashi



Takamishima

"Takamijima Project/Time falls" Kayako Nakashima  
photo: Shintaro Miyawaki



Ibukijima

"Iriko Retreat" Mikan+Meiji University Students  
photo: Yasushi Ichikawa



Shamijima

"Nine Legs of Eight People" Syuzo Fujimoto  
photo: Kimito Takahashi



Awashima

Project for the Museum of Seabed Inquiry Ship in Setouchi/Katsuhiko Hibino  
photo: Kimito Takahashi



Uno Port

"Chinu - the Black Sea Bream of Uno /  
Kochinu - Kiddie Black Sea Bream of Uno" Yodogawa-Technique  
photo: Yasushi Ichikawa

### INFORMATION

## Setouchi Triennale 2019

"Setouchi Triennale" is a modern art festival, held in the islands of the Seto Inland Sea. The festival introduces a new style of exhibition. Visitors experience artworks blended into the nature and cultures of the islands, going by ship from island to island in the beautiful Seto Inland Sea.

<http://setouchi-artfest.jp>

Contact: 3rd Fl., Takamatsuko Ryokaku Terminal Building, 1-1 Sunport, Takamatsu City, Kagawa Prefecture 760-0019

Setouchi Triennale Executive Committee Office Tel: 087-813-0853

Exhibition period: Spring ("New Meeting Spring") | April 26 (Fri.) – May 26 (Sun.), 2019, 31 days

Summer ("Get Together Summer") | July 19 (Fri.) – August 25 (Sun.), 2019, 38 days

Autumn ("Explore Autumn") | September 28 (Sat.) – November 4 (Mon.), 2019, 38 days

Venues: Naoshima, Teshima, Megijima Megijima, Ogijima, Shodoshima, Inujima, Oshima, Inujima, Shamijima (spring season), Honjima (autumn season), Takamishima (autumn season), Awashima (autumn season), Ibukijima (autumn season), Port of Takamatsu / Uno Port area





03

A charming museum at the foot of a giant bridge

# Kagawa Prefectural Higashiyama Kaii Setouchi Art Museum



Appearance photo: Toshiharu Kitajima



Kaii Higashiyama, "Gekko (Moonlight)" 1998.



Scenery from the lounge

This cozy prefectural museum was designed by architect Yoshio Taniguchi and houses the artworks of the great artist Kaii Higashiyama. Having held connections with Kagawa Prefecture, he later went on to donate his pieces to the region. Higashiyama's brilliant works emit a sense of personal warmth, reflecting the spirit of the donor. Furthermore, when going down the stairs of the museum, one can see the Seto Ohashi Bridge, the colour of which was chosen by this prolific artist.



Break Time

Museum Cafe

## Higashiyama Kaii Setouchi Art Museum Cafe Na-Gi-Sa

Tel: 0877-44-1333

With large glass windows offering an expansive view over the Seto Inland Sea, this is a café where one can rest and relax. Along with drinks such as matcha (powdered green tea), visitors can also enjoy Japanese sweets called "Amamo" which are prepared especially for the museum.

<http://www.pref.kagawa.lg.jp/higashiyama/>

224-13, Aza Minamitori, Shamijima, Sakaide City, Kagawa 762-0066 Tel: 0877-44-1333

Open: 9:00 - 17:00 (Last admittance: 16:30)

Closed: Mondays and end of year and New Year holidays

※ If Monday is a national holiday, the museum opens on Monday and closes on Tuesday.

※ Occasionally closed for exhibition set-up and preparation of exhibitions. Ask staff for more details.

※ Open on Mondays during Golden Week (from April 29 through May 5), and during the summer vacation

Admission: (Children 18 and under) Free (Citizens 65 and over) Free

(General admission) ¥300 (Extra fee required for special exhibitions.)

Access: Approx. 20 minutes from JR Sakaide Station or JR Utazu Station by car

Approx. 10 minutes from Sakaide-Kita IC, or approx. 20 minutes from Sakaide IC by car

※ You cannot exit the highway from the Shikoku side of the Sakaide-Kita IC.

Architect

## Yoshio Taniguchi

After graduating from the Faculty of Engineering at Keio University in 1960, Taniguchi then studied at Harvard University's Graduate School of Design, earning his Master's degree in Architecture in 1964. After working in the Urbanists and Architects Team (Kenzo Tange Associates), Taniguchi founded Taniguchi and Associates. Famous works include the "Marugame Genichiro-Inokuma Museum of Contemporary Art" and the "Higashiyama Kaii Setouchi Art Museum."

04

A museum with a relaxed atmosphere right in front of the station

# Marugame Genichiro-Inokuma Museum of Contemporary Art

Having spent his childhood in Marugame City, art master Inokuma privately organized this museum project which eventually birthed the Marugame Genichiro-Inokuma Museum of Contemporary Art, as designed by Yoshio Taniguchi. Along with sculptures at the entrance, wall paintings invite guests to step inside Inokuma's world. The museum hosts many highly motivated special exhibitions of modern art, and provide various workshops for guests to participate in.

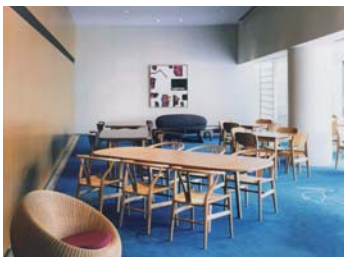


photo: Kazuhiro Fujita



photo: Tadasu Yamamoto



photo: Tadasu Yamamoto



※ You cannot exit the highway from the Shikoku side of the Sakaide-Kita IC.

<http://mimoca.org>

80-1, Hamamachi, Marugame City, Kagawa 763-0022 Tel: 0877-24-7755

Open: 10:00 - 18:00 (Last admittance: 17:30)

Closed: End of the year (Dec. 25 - 31) ※ Contact required after Oct. 2018

Admission: The permanent exhibit is 300 yen for adults and 200 yen for university students

(Admission fees for special exhibits are set separately for each exhibit)

Free for visitors of high school age or younger, visitors under 18 years of age,

and Marugame residents of 65 years and older

Access: About a 1-minute walk from JR Marugame Station

Approx. 10 minutes from Sakaide-Kita IC, or approx. 15 minutes from Sakaide IC or Zentsuji IC by car

## Cafe & Rest MIMOCA

Tel: 0877-22-2340

The museum cafe offers an intimate space to enjoy coffee and browse various CD's and miscellaneous goods on offer. Visitors are free to enter the café directly, without the need to pay museum admission.

Museum Cafe



# Kotohiragu Shrine



"Yuko-zu (playing tigers)" by Okyo Maruyama

## Shoin (Traditional Japanese Drawing Room)

According to legend, this palace was built in the Manji era (1658-1660). No longer in its original condition, this site now presents a cultural zone within the grounds of Kotohiragu Shrine. It consists of the important cultural asset "Omote-shoin", a building with half-hipped roofs covered with Japanese cypress barks and made in the Irimoya style, and the "Oku-shoin", another important cultural asset allegedly built in the same era. The "Omote-shoin" is particularly known for the pictures found on its partitions which were produced by painter Okyo Murayama in the Edo Period and stand as another important cultural asset. The "Oku-shoin" also has pictures on its partitions called "Hyakka-zu," (One-hundred flowers) which were painted by Jakuchu Ito. Ito's works have recently come under special attention however, the "Oku-shoin" is not regularly opened, unlike the "Omote-shoin". Only Omote-shoin is open to the public.



## Museum of Yuichi Takahashi

Kotohiragu Shrine has 27 oil paintings by Yuichi Takahashi permanently exhibited in the Museum of Takahashi Yuichi. A pioneer of modern Japanese painting, visitors can see his famous works, such as "Futamigaura", a portrait of the chief priest of the shrine Hirotsune Kotooka, which was first donated to the shrine in 1878. Additionally, the excellent texturing present in his Meiji Era painting "Tofu" as well as his finesse for still-life paintings, as exemplified in "Tara Baika" (haddock and plum blossom), still resonate to this day.



"Tofu (bean curd)" by Yuichi Takahashi

## Treasure Hall

Treasure Hall is the first museum of Kotohira-gu Shrine. Built in 1905, it is a museum from the earliest days of Japan. The museum interior features the important cultural property Heian Era Buddhist statue called "Standing Statue of Eleven-Faced Kannon" and other pieces in its permanent exhibit.



<http://www.konpira.or.jp>

892-1, Kotohira-cho, Nakatado-gun, Kagawa 766-8501

Tel: 0877-75-2121

Open: 8:30 - 17:00 (Last admittance: 16:30)

Closed: Open throughout the year, but subject to sudden closure for new exhibition preparation.

Admission:

Takahashi Yuichi Kan: (Children 15 and under) Free  
(Children 16-18 years) ¥400 (General admission) ¥800

Omote-shoin: (Children 15 and under) Free  
(Children 16-18 years) ¥400 (General admission) ¥800

Treasure Hall: ¥800 for adults, ¥400 for high school and university students,  
free for visitors of junior high school age and younger

Access: Approx. 15 minutes from Zentsuji IC or approx. 30 minutes from Sakaide IC by car  
(A municipal parking lot is available.). About a 40-minute walk to Takahashi Yuichi Kan from  
the municipal parking lot or from JR Kotohira Station

Break  
Time

Museum Restaurant

## New tea room "Kamitsubaki"

Tel: 0877-73-0202

This renewed tea room was built on the slope of a shrine's grounds and contains an impressive mural decoration made from famed Arita porcelain. Shiseido Parlour operates a tea room on the ground floor, and a restaurant on the first basement floor. A reservation is required for dinner.



## 06 A great sculptor's "Gift for future generations" The Isamu Noguchi Garden Museum Japan

Isamu Noguchi, one of the leading sculptors of the 20th century, launched a studio in 1969 in Takamatsu City Mure, a production spot for high quality granite Aji stone. From this base, he engaged in creation for the next twenty years, traveling back and forth from New York as well. This peaceful spot is currently open to the public as an art museum housing approximately 150 sculpture works including unfinished pieces, a dwelling area, an exhibit hall, and a garden created as a sculpture. Visitors can experience the ambiance of Isamu Noguchi just as it was in his lifetime.

<http://www.isamunoguchi.or.jp>

3519, Mure, Mure-cho, Takamatsu City, Kagawa 761-0121 Tel: 087-870-1500

Open: Tuesdays, Thursdays, and Saturdays

Hours: Three times at 10:00, 13:00, and 15:00 per day (about 1 hour, for the fixed number of visitors)

Visitors require reservations (Send a return post-card to the museum office to apply for a visit date).

Closed: Mondays, Wednesday, Fridays, and Sundays (Summer closing period: August 13 - August 16 /

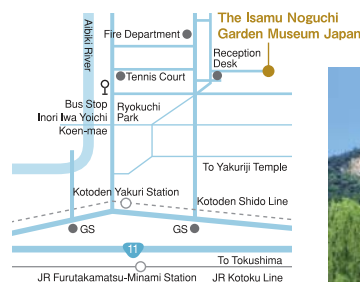
Winter closing period: December 26 - January 5 ※ Dependent on the year)

Admission: (Children 15 and under) Free (Children 16-18 years) ¥1,080 (General admissions) ¥2,160

Exhibited facility: Atelier (inside stone wall circle), exhibition storehouse, surrounding area of Isamu's residence,  
and sculpture garden

Access: Approx. 20 min. by car from the Takamatsu Chuo Interchange, approaching from the Okayama - Ehime area.

Approx. 20 min. by car from the Shido Interchange or Samuki-Miki Interchange, approaching from the Awaji - Tokushima area.





07

Furniture born from a deep communion with wood

## George Nakashima Memorial Gallery

George Nakashima made furniture whilst in deep contemplation of the wood he was using. Resultantly, when surrounded by his works, one feels as if they are in a forest. Since 1964, George Nakashima also began working with Sakura Seisakusho, the only artist whose skill Nakashima recognized, to create the finest furniture. Sakura Seisakusho went on to establish a Memorial Gallery in 2008 to share his life philosophies with visitors. We can see over sixty of Nakashima's works, including the chairs which he made in his early years as an architect, and the desks he used in his studios. Outside of New Hope, in the United States, this memorial gallery is the only place in the world to appreciate George Nakashima's works.



The Gallery Shop on the first floor of the museum contains books about George Nakashima as well as small articles of his design and created by Sakura Seisakusho. It also has a room where one can sit on chairs designed by George Nakashima.



<https://www.sakurashop.co.jp/>

11132-1, Omachi, Mure-cho, Takamatsu City, Kagawa 761-0122

Tel: 087-870-1020

Open : 10:00 - 17:00 (Last admittance: 16:30) ※ Group visitors require a reservation.

Closed: Sundays, Holidays, summer period, and year-end and New Year holidays

Admission: (Children 15 and under) ¥200 (General admissions) ¥500

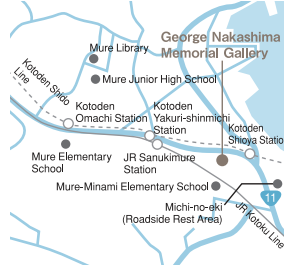
Access: Approx. 25 minutes from JR Takamatsu Station, or approx. 10 minutes from Shido IC by car

Approx. 20 minutes from Takamatsu-Chuo IC, or approx. 40 minutes from Takamatsu Airport by car

About a 5-minute walk from Kotoden Shioya Station

About an 8-minute walk from Kotoden Yakuri-shinmichi Station

About an 8-minute walk from JR Mure Station



08

A quaint museum in harmony with nature

## Shikoku Mura Gallery



Shikoku Folk House Museum (Shikoku Mura) is located at the foot of Mt. Yashima, known as an old battle field of the Genpei War. Old buildings constructed from the Edo period to the Taisho period were moved from the various locations in Shikoku, and restored here as an open air museum. Shikoku Mura Gallery, a small museum designed by Tadao Ando, is located in the site. The gallery permanently exhibits a wide variety of artworks such as paintings, sculptures, and glassware. From the balcony, we can overlook a water landscape garden and a rose garden, constructed making use of the site location.

<http://www.shikokumura.or.jp>

91, Yashima Nakamachi, Takamatsu City, Kagawa 761-0112 Tel: 087-843-3111

Open: 9:00 - 17:00 (Last admittance to Shikoku Mura: 17:00) / April - October

9:00 - 16:30 (Last admittance to Shikoku Mura: 16:30) / November - March

Closed: Open throughout the year

Admission: (Children 15 and under) ¥450

(Children 16-18 years) ¥600

(General admissions) ¥1,000

※ Includes admittance to Shikoku Mura

※ Entrance fees may change during special exhibits.

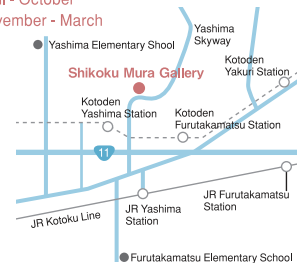
Access: Approx. 20 minutes from JR Takamatsu Station by car

About a 10-minute walk from JR Yashima Station

About a 5-minute walk from Kotoden Yashima Station

Approx. 15 minutes from Takamatsu-Chuo IC

Approx. 40 minutes from Takamatsu Airport by car



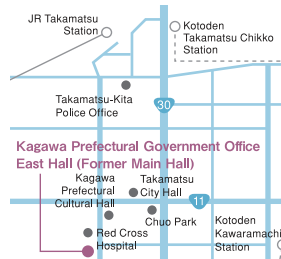
09

Modern architecture incorporating traditional aesthetics

## Kagawa Prefectural Government Office East Hall (Former Main Hall)

This building is a masterpiece of Kenzo Tange, the first Japanese architect to receive the Pritzker Architecture Prize equivalent to the Nobel Prize of the architectural world. Exhibiting a marriage of tradition and modernism, the prefectural office is appreciated as one of the most important works in architectural history and is still an attractive and valuable property even 50 years following completion. Although it bears a close resemblance to traditional Japanese wooden buildings, it also contains unique features such as an exposed concrete exterior, which provides a distinctly modern flair as well. The use of open space was also progressive for the time in that it went against the authoritarian image of conventional government buildings. The piloti and open glass window lobby is naturally inviting to visitors and continues to serve as a model example of city hall buildings post World War II. A wall painting by Genichiro Inokuma is also located on the first floor as well as an architecture gallery in the lobby which introduces various points of interest throughout the building.

※Undergoing seismic retrofitting construction until December 2019 (date subject to change)



<http://www.pref.kagawa.lg.jp/zaisankeiei/higashikan>

4-1-10, Bancho, Takamatsu City, Kagawa 760-8570 Tel: 087-831-1111

Open: 8:30 - 17:15

Closed: Saturdays, Sundays, holidays, Year-end/New Year Holiday

Access: Approx. 20 min. on foot from JR Takamatsu Station. Approx. 15 min.

on foot from Kotoden Kawaramachi Station. Approx. 20 min.

by car from Takamatsu Chuo Interchange. Approx. 20 min.

by car from Takamatsu West Interchange.

Architecture

### Kenzo Tange

Architect and urban planner. Representative achievements include the Hiroshima Peace Memorial Park, Yoyogi National Gymnasium, St. Mary's Cathedral, Tokyo, and the master plan for Japan World Exposition, Osaka 1970. He designed over 330 city and architecture projects in 31 countries during his life. He exerted a massive influence on the Japanese world of architecture, inspiring an enormous amount of innovative architects including Fumihiko Maki, Koji Kamiya, Arata Isozaki, and Yoshio Taniguchi.