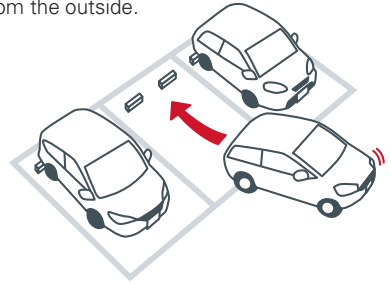


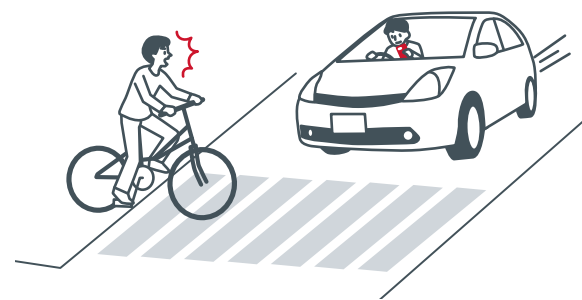
## Beware of minor collisions in parking lots!

Unfortunately, many accidents caused by foreign tourists occur in parking lots. These accidents usually happen due to misjudging the car widths and hitting the cars parked behind and alongside, or damaging signs and other surrounding objects due to inattention. When parking the car, it is better to back the car in slowly and exit the car forward to confirm your safety. If you are a fellow passenger, please guide the driver from the outside.



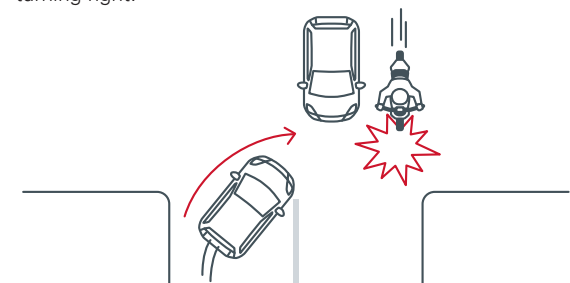
## Operating a cell-phone while driving is prohibited

Many rear-end collisions are caused by inattention to the front of the car, such as being distracted by a cell-phone or using a car navigation system, or looking at the scenery. It is forbidden for drivers to talk holding their phones or using the screens with their hands while driving. It is dangerous and should be avoided at all costs. Always stop the car and operate the navigation systems from a safe place.



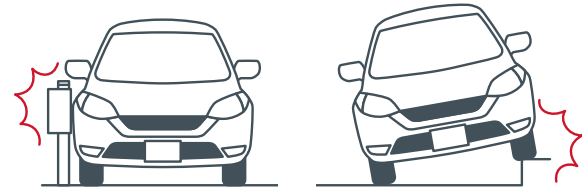
## When turning right, an oncoming car has priority

When turning right at an intersection, oncoming cars have priority. Pause and wait for the cars to proceed, and also check for bikes going straight ahead or behind any oncoming cars, pedestrians or cyclists trying to cross the crosswalk. If you are not used to driving on the left side of the road, be careful not to cross into the right lane after turning right.



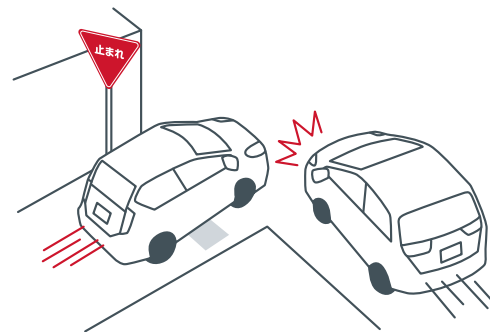
## Look out for road kerbs and other obstacles!

While traveling, it is easy to get distracted by many things. Accidents often occur when people inadvertently overlook a stop sign, utility pole, pole, kerb, or a guard rails in the immediate vicinity of a car. When you park and open your car door, be careful not to hit the car next to you or a wall.



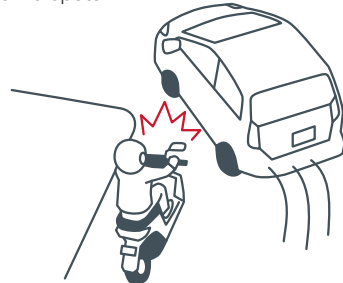
## Remember the Japanese "pause" sign!

At the red inverted triangle "Stop" sign, always stop and check for safety before proceeding. Many accidents occur when people enter an intersection without recognizing the sign and collide with an approaching car. It is also obligatory to yield at flashing red signals and in front of railroad crossings where there are no lights. Please make sure you are safe.



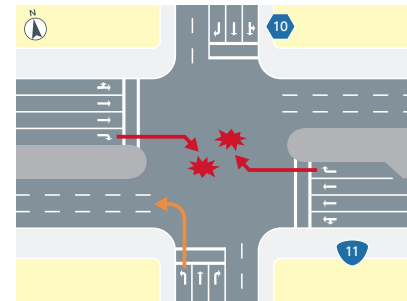
## Be very careful making left turns

Be careful with left turns, especially if you are not used to right-hand drive cars. If there is a bicycle or motorcycle on the left side of the road, you could be caught in the middle. Be sure to indicate a left turn with your indicator to alert following cars, check the left side and rear of the car in the inside rear view mirror and the side mirrors, and visually check the blind spots.



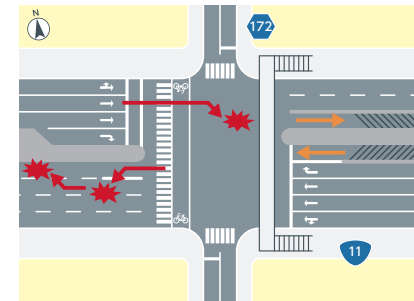
## Kagawa Higashiyamazaki Intersection MAP ②4C

There are big expressway uprights on the east and west sides of this intersection, making it difficult to see right-turning cars. Also, on the prefectural road which heads north toward the intersection, the sidewalk lane is used only for making left turns. Be careful because there are many cars changing direction right before this intersection.



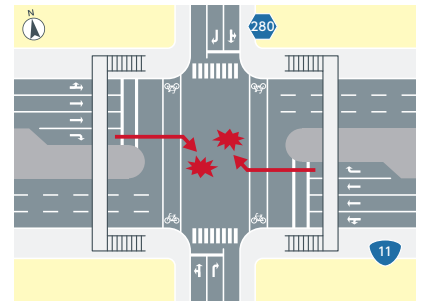
## Kagawa Kamitenjin Nishi Intersection MAP ②4B

East-west is a busy intersection with three lanes of traffic running in each direction. There is an underpass on the east side of the intersection, so there are many cars changing lanes, and the movement of cars is complex due to the time-synchronized traffic lights. Look ahead to avoid distractions.



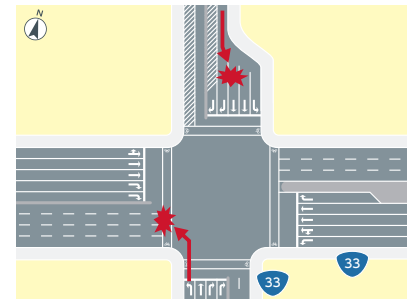
## Kagawa Sanjo Intersection MAP ②4B

There are large shopping centers and other facilities nearby, and the intersection is always busy with traffic. There are uprights on the expressway blocking visibility, and there are also many cars turning right, so keep an eye out. Unfortunately there are sometimes rear-end collisions.



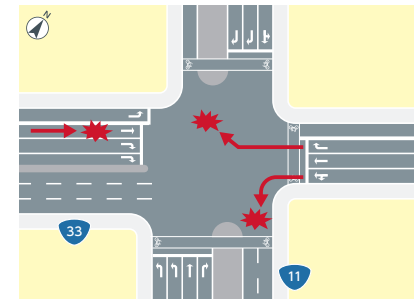
## Ehime Amayama Intersection MAP ③4C

This is a busy intersection where major expressways intersect. There are many lanes running in each direction, and these are visually marked with right and left turn sections. This is a time-synchronized system traffic light, and the timing of the starting or stopping differs depending on the direction of travel, so watch out for the movement of the cars in front of you.



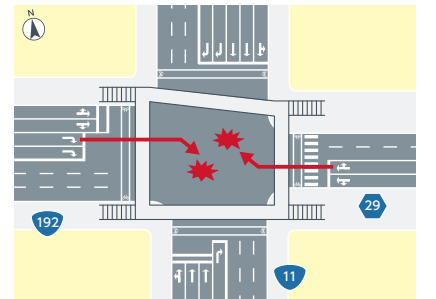
## Ehime Kosaka Intersection MAP ③3C

The intersection is located under an elevated road and has poor visibility due to large uprights. The eastbound national road is downhill with only one straight lane, and there are sometimes rear-end collisions and right/left turn accidents. Traffic is heavy, especially during commuting hours and on holidays.



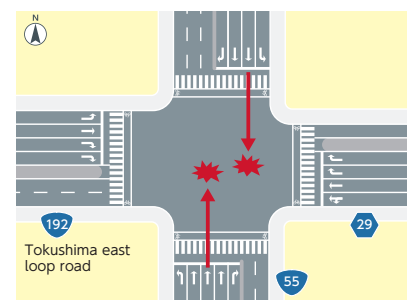
## Tokushima Honmachi Intersection MAP ③5G

This is the busiest intersection in Tokushima Prefecture, where major expressways intersect. It is often congested and rear-end collisions and fender-benders caused by forced right and left turns are frequent. Please be aware that there are many bicyclists commuting to work and schools in the mornings and evenings.



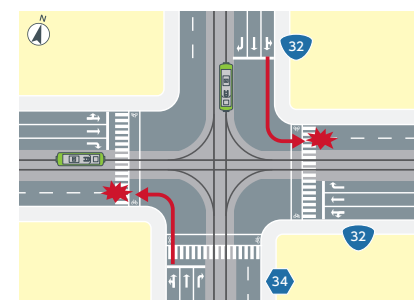
## Tokushima Ono Intersection MAP ⑤2F

This is a large intersection where the National Route and the Tokushima Loop Lines intersect. As the National Route goes downhill from north to south towards the intersection. It is easy to overspeed and rear-end collisions occur frequently. With the development of the Loop Lines, traffic has increased and there are many accidents when making right or left turns.



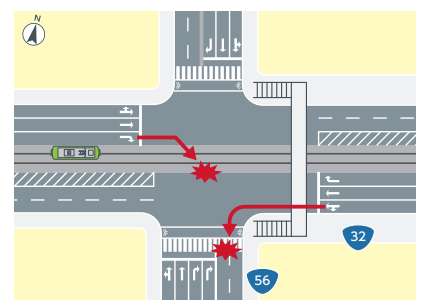
## Kochi Harimaya-Bashi Intersection MAP ⑦4E

This is a major intersection where major expressways intersect and streetcar tracks also intersect. It is always crowded with traffic. The movement of cars, trains, and people can be complicated, so please pay attention not only to oncoming traffic but also to crosswalks after turning right or left.



## Kochi Nakahoei Intersection MAP ⑦4G

This is an intersection where major expressways intersect and streetcars run east-west. The traffic volume is often very heavy, and rear-end collisions and right/left turn accidents can sometimes occur. It is especially crowded during commuting hours, and there are many pedestrians and bicycles, so please check your safety after turning right or left.



**1 Driving on the left**

In Japan, cars drive on the left side of the road; on roads with two or more lanes, the right lanes are reserved for overtaking and right turns.

**2 Pedestrian priority**

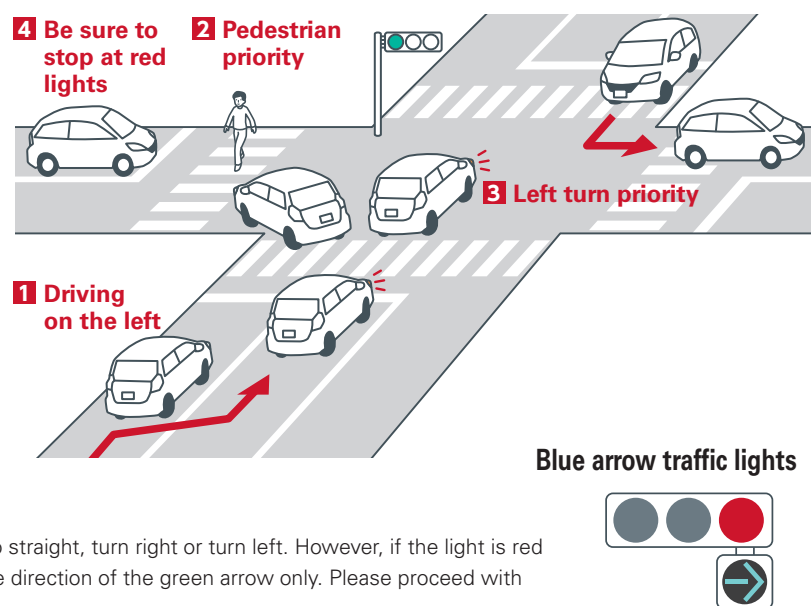
When pedestrians or bicycles are crossing or about to cross a crosswalk, always yield before the crossing. Proceed only after they have safely crossed.

**3 Left turn priority**

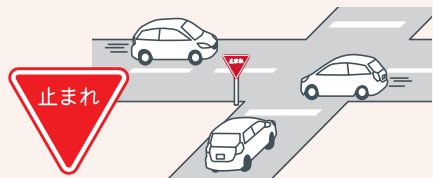
At intersections, cars turning left or going straight have priority. Cars turning right should let oncoming traffic pass before turning right.

**4 Be sure to stop at red lights**

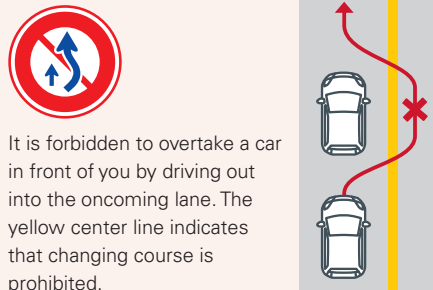
When the traffic light is red, you are not allowed to go straight, turn right or turn left. However, if the light is red but the green arrow indicates, you may proceed in the direction of the green arrow only. Please proceed with caution to avoid oncoming traffic.

**Especially important signs and markings**

Red signs indicate prohibition, yellow signs indicate proceed with caution, and green signs indicate instruction.

**Stop**

At intersections with these signs, it is necessary to pause even if there is no signal. Check the road ahead and to the left and right for safety before entering the intersection.

**Prohibitions concerning the overtaking of traffic**

It is forbidden to overtake a car in front of you by driving out into the oncoming lane. The yellow center line indicates that changing course is prohibited.

**Speed regulations**

50 means that the maximum speed limit is 50 km/h. On roads without signs, the maximum speed is 60 km/h on ordinary roads and 100 km/h on expressways only.

**There is a railroad crossing ahead of this sign**

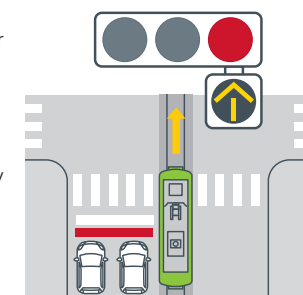
Be sure to pause before the railroad crossing so that you can cross safely. It is dangerous to remain on the railroad crossing.

**Normal bicycle-only lane zones**

In Japan as a rule, bicycles can also use the roads. The area with this sign is a bicycle lane, where cars are not allowed to drive. The surfaces are mainly painted in blue or brown.

**Pedestrians only****No parking****No U-turn****One way**

Proceeding in any direction other than the specified direction is prohibited

**Yellow arrow traffic lights****You must not drive under the influence of alcohol**

In Japan, drink-driving is strictly punished. If driving while intoxicated, the person who encourages the driver to drink or the passenger who knows the driver has been drinking is also subject to punishment.

**Beware of Streetcars**

Streetcars run in Ehime and Kochi Prefectures. As a rule, cars are not allowed on the railway tracks. You may cross to turn right or left, cross the street or turn, and wait for the right moment outside the railway track. Also, when the yellow arrow signal is lit on, only streetcars can proceed.

**If you are involved in a traffic accident****1 Secure your own safety**

Move your car to a place where it will not interfere with the oncoming traffic flow, and move yourself to a safe place with your passengers.

**2 Call an ambulance**

If anyone is injured, call 119 for an ambulance.

**3 Call the police**

Call the police number 110 and follow the police officer's instructions when they arrive.

**4 Contact the car rental company**

Contact the rental car company and follow their instructions. Consult with the company about road assistance and help contacting an insurance company.

**Report even minor accidents to the police**

In Japan, you are required to report any traffic accident to the police. If you do not report the accident, you will not be issued an accident certificate, which is necessary for insurance coverage.

**Identify the other party**

Give your name and phone number to the other party of the accident, and ask for their information as well.

**If you get a parking ticket****1 Report to the Police**

Call the phone number listed indicated on the parking ticket.

**2 Pay the fine**

When you go to the police station, complete the necessary paperwork and you will receive a payment notice. Pay the illegal parking fine at the nearest financial institution and get a receipt.

**3 Report to the car rental company**

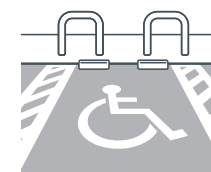
Present the rental car company with the necessary documents and receipts.

**If you want to park a car, make sure there are no signs prohibiting parking**

In Japan, parking violations are strictly enforced, and if you are caught, you will have to pay a fine of 10,000 to 20,000 yen (for standard cars). Check the signs and road markings carefully when you park your car.

**No Parking, No Stopping****No Parking****Do not park in a parking space marked with a wheelchair symbol**

Parking spaces marked with a wheelchair symbol are reserved for people with disabilities, the elderly, and expectant and nursing mothers. If you do not fit these categories, it is good manners not to use them.

**Contact information in case of disaster or emergency****In case of disaster or emergency****Call the Police**

☎ 110

**Call an Ambulance or Fire Engine**

☎ 119

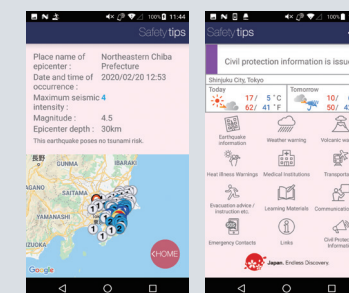
**Consult in case of illness or disaster**

☎ 050-3816-2787

Call center is available for 24 hours in English, Chinese, and Korean. Emergency support, consultation regarding the new coronavirus, and referrals to medical institutions that can accept people/patients in foreign languages.

**Checking Disaster Information****Safety tips**

This is a free disaster information application supervised by the Japan Tourism Agency. You can receive emergency notifications such as earthquake alerts, tsunami warnings, and special weather warnings in Japan. You can also search for hospitals in foreign languages. Available in 15 languages including English and Chinese.



Download available from here

for Android



for iOS





# How to use the expressways Essential driving points

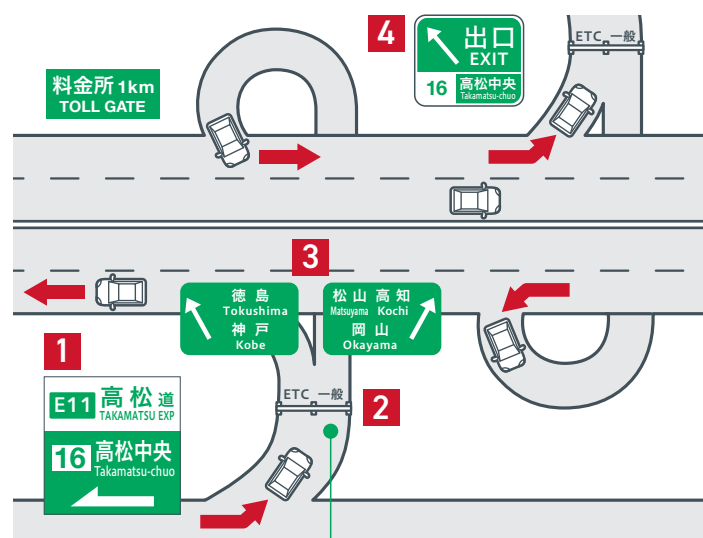
## 1 Where to enter?

Expressway signs are green. The direction of the entrance to the expressway is indicated in green on the blue guide signs for general roads, so please use them as landmarks as you proceed. The expressway entrance sign shows the number and name of the route, and the number and name of the interchange, so check them before entering.



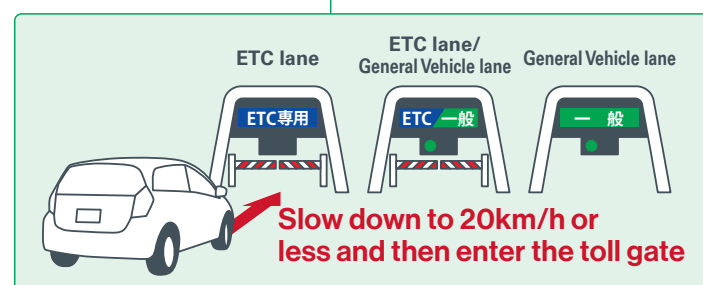
## 2 Which lane to go through at the Entrance tollgate?

If your car can use the ETC system, proceed to the "ETC Only" lane. Be sure to slow down to 20 km/h or less to enter the toll gate as it may not open due to a communication error. If your rental car cannot use the ETC system, go to the "General" lane and collect your toll pass ticket. In some cases, there is a combined lane that can accommodate both "ETC" and "General" types of cars.



## 3 Which way to go?

Directional information is indicated by the name of the city. Make sure you know which direction your destination is in advance. If you make a wrong turn, exit the expressway at the next interchange and re-enter. Do not drive a car in reverse or drive in the opposite direction, as it is dangerous.



## 4 How to pay the expressway tolls?

If you enter from the ETC lane, exit from the ETC lane. Just slow down and pass through as you entered the ETC Lane, and your ETC card will be charged automatically. If you enter from the general lane and receive a toll ticket, pause while in the general lane and pay the toll to a payment machine or attendant.

## The Basics of Expressways

### Which cars can use the ETC system?

ETC is a convenient system that allows you to pass through the toll gate without stopping to pay the toll. To use the system, you need an OBE (on-board device) and an ETC credit card. Please check with your car rental company to see if they have one available.



### Seatbelts are required to be used in the back seats

In Japan, it is compulsory to wear seat belts in all seats, regardless of whether you are driving on a public road or an expressway. Especially on expressways, be aware that the driver is also subject to penalties of a fellow passenger for not wearing a seatbelt in the back seat.



### Keep-left and drive safely!

When there are two or more lanes in one direction, the right lane is the passing lane. Normally, you drive in the left lane. The maximum speed is normally 100km/h. Keep a good distance between cars and drive safely. In Shikoku, many expressways are limited to 70-80km/h indicated by signs.

## If you encounter trouble on the expressway

### 1 Pull over to the shoulder of the road

If you find that your car has a flat tire or a breakdown, slow down, then turn on the hazard lights and pull over to the shoulder of the road or emergency parking area.



### 2 Signal to following cars

Set up a warning flare or a stop display sign located in the rear of the car, paying attention to the other cars behind.

### 3 Evacuate to a safe place before reporting

It is dangerous to stand on the road or remain in the car. Everyone needs to leave to a safe place, and in case of injury or car fire, call 119 first, then 110. If there is an emergency phone nearby, use it.

### How to use a roadside emergency phone

When using an emergency phone, simply pick up the receiver to connect to the road control center, and the location of the phone will be understood. Some phones have buttons for malfunctions, accidents, emergencies, and fires. Emergency phones are installed every 1km on the main expressways, every 200m in tunnels, and at interchanges, service areas, and emergency parking zones.

# Use it wisely and enjoy your trip! Expressway Guide Map



## Make sure you have enough time in your schedule

Shikoku may look small, but it takes an unexpectedly long time to travel around by car. Please make sure you allow enough time in your schedule to enjoy driving safely.

### Approximate distances and times between interchanges

#### From Takamatsu Chuo IC

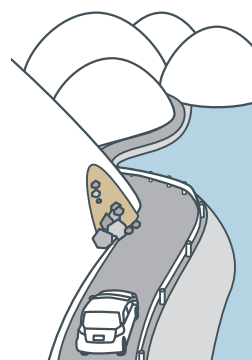
About 56km to **Naruto IC**, takes about 40min.  
About 66 km to **Tokushima IC**, takes about 50 min.  
About 124 km to **Kochi IC**, takes about 1 hour and 30 min.  
About 151 km to **Matsuyama IC**, takes about 1 hour and 40 min.

#### From Matsuyama IC

About 57 km to **Imabari IC**, takes about 55 min.  
About 64 km to **Seiyo Uwa IC**, takes about 1 hour.  
About 143 km to **Kochi IC**, takes about 1 hour and 45 min.  
About 183 km to **Tokushima IC**, takes about 2 hours and 25 min.

## Mountainous and riverside roads can be difficult to drive!

The speed limit on general roads in Shikoku is 40km/h in many places, and there are narrow roads and consecutive sharp curves in mountainous and coastal areas, as well as sections that are closed during unusual weather. Even if the route is guided by using the car navigation system, there are actually some roads that should be avoided. On the map starting from the next page, the sections that require caution are indicated in pink color. Please check them.



## Click here to collect information on expressways

### NEXCO West Japan

(English, Simplified Chinese, Traditional Chinese, Korean)

- Information on special excursion tickets avail only to foreign travelers
- Expressway tolls and route search
- Information on facilities at service areas, etc.

<https://global.w-nexco.co.jp/en/>



### I-Highway West Japan (Japanese)

- Real-time traffic information map, including road closures and accident information

<https://ihighway.jp/pcsite/>



### Road Emergency Number Call

Emergency dialing for unusual road conditions and it will be reported by dialing this number 24 hours a day.

#9910

### STOP! NAGARA DRIVING PROJECT

NEXCO West is working to raise awareness of the need to eliminate traffic accidents on expressways.

<https://snd-project.jp/>



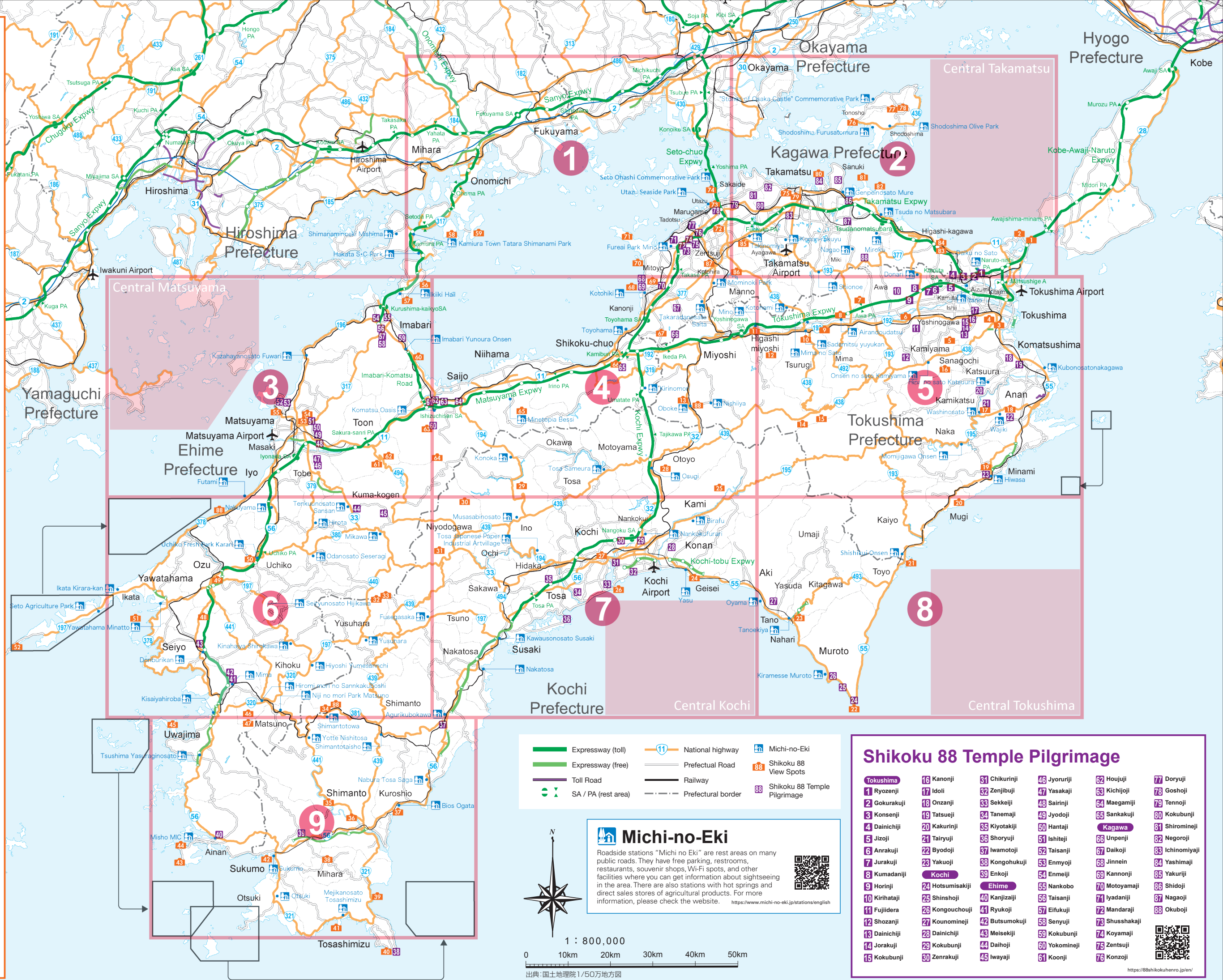


## Shikoku 88 View Spots

<https://www.skr.mlit.go.jp/shikoku/88-ke/en/>



- 1 Uzu-no-Michi Walkway (Onaruto Bridge Promenade)
- 2 Restaurant California Table
- 3 Hyotanjima Cruise
- 4 Bisan Ropeway
- 5 Potelette Plaza, Kamiyama Forest Park
- 6 Iwa-no-Hana Observation Deck
- 7 Earth Pillars of Awa Observation Deck
- 8 Wakimachi Udatu Townscape
- 9 Honraku-ji Temple, Mt. Renge
- 10 Historic town of Two-Storeyed Udatu
- 11 Okusu Park
- 12 Mizunomaru Fureai Park
- 13 Oboke Gorge Pleasure Boat
- 14 Oku-Iya Double Vine Bridges
- 15 Mt. Tsurugi Summit
- 16 Okowara Plateau
- 17 Taiyuri Ropeway
- 18 Hakusuzan, Iou-in, Byodo-ji Temple
- 19 Iosan, Muryoju-in, Yakuo-ji Temple
- 20 Mollusco Mugi, Mugi Town Wooden Model Facilities
- 21 Blue Marine Underwater Sightseeing Boat
- 22 Cape Muroto (Kanjogahama)
- 23 "Monet's Garden" Marmottan
- 24 Sea House
- 25 Todoroki-Taki Falls Observation Deck
- 26 Katsurahama Park
- 27 Kochi Castle / Kochi Castle Museum of History
- 28 Yutorisuto Park Otoyō
- 29 Nikobuchi
- 30 Yasui Valley
- 31 Nakatsu Valley
- 32 Prefectural Road Crossing Shikoku Karst Park
- 33 Tengusou Highland House
- 34 Shimanto Ochokuri Café
- 35 Kawaracko Shimanto Canoe and Camping Village
- 36 Shimanto River Bed (Nyuta Willows)
- 37 Seaside Gallery (Irino-no-Hama Beach in Kuroshio, Kochi)
- 38 Hoshigaoka Park (Himeno Peony Village)
- 39 Oki Beach Gazebo
- 40 Cape Ashizuri Cruise
- 41 Minokoshi Coast Footpath
- 42 Sukumo Resort Yashi-no-Yu
- 43 Cape Komo
- 44 Satodamari Stone-Walled Village (Area Pathways)
- 45 Yuzumizugaura Terraced Fields (Pathways)
- 46 Narukawa Gorge
- 47 Nametoko Gorge
- 48 Kokemushiro
- 49 Houseboat
- 50 Townscapes of Yokaichi and Gokoku
- 51 Michi-no-Eki, Minato Oasis Yawatahama Minatto
- 52 Mt. Tsubaki Observation Deck
- 53 Matsuyama Castle
- 54 Dago Onsen Honkan Area
- 55 Mitsuo no Watashi (Takahama City Route No. 2)
- 56 Kurushima Strait Quickwater Ship
- 57 Mt. Kiro Observatory Park
- 58 Michi-no-Eki Tataru Shimanami Park
- 59 Inland Sea Resort Fespa
- 60 Kyukamura Setouchi Toyō
- 61 Shirai-no-Taki Falls (within Saragamine Range Prefectural Natural Park)
- 62 Namegawa Gorge
- 63 Mt. Ishizuchi Fukuchi-in Yakomine-ji Temple
- 64 Mt. Ishizuchi (Seven Sacred Mountains of Japan)
- 65 Minetopia Besshi (Tounaru Region)
- 66 Mishima Park
- 67 Honenike Yusui Park
- 68 Kotohiki Park Zenigata Observation Deck
- 69 Mt. Inazumi Observation Deck
- 70 Chichibugahama Beach
- 71 Mt. Shide Summit (Mt. Shide Archaeological Museum and Café)
- 72 Miyaake Pond
- 73 St. Angelina
- 74 Higashiyama Kaii Setouchi Art Museum (Café)
- 75 Hanajukai (Terrace)
- 76 Angel Road (Angel Café)
- 77 Shihazashi Daikanbo Observatory
- 78 Kankakei Ropeway
- 79 Ritsurin Garden (Kikugetsu-Tei)
- 80 Shishi-no-Reigan Observatory, Yashima
- 81 Okushi Nature Park Green Space
- 82 Shido Country Club (Restaurant)
- 83 Pleasure Boat
- 84 Hiketa Honmachi Route
- 85 Kitokurasu Café
- 86 Sanuki Manno National Government Park (Shoryu-no-Taki Falls)
- 87 Kotohira-gu Shrine, Hongu (Main Shrine)
- 88 Shiman Torokko, Shikoku Mannaka Sennen Monogatari, and Iyonada Monogatari



- Expressway (toll)
- Expressway (free)
- Toll Road
- SA / PA (rest area)
- National highway
- Prefectural Road
- Railway
- Prefectural border
- Michi-no-Eki
- Shikoku 88 View Spots
- Shikoku 88 Temple Pilgrimage

### Michi-no-Eki

Roadside stations "Michi no Eki" are rest areas on many public roads. They have free parking, restrooms, restaurants, souvenir shops, Wi-Fi spots, and other facilities where you can get information about sightseeing in the area. There are also stations with hot springs and direct sales stores of agricultural products. For more information, please check the website.

<https://www.michi-no-eki.jp/stations/english>

Shikoku 88 Temple Pilgrimage							
<b>Tokushima</b>	<b>1</b> Ryozenji	<b>16</b> Kanonji	<b>31</b> Chikurinji	<b>46</b> Jyoruriji	<b>62</b> Houjuji	<b>77</b> Doryuji	
<b>2</b> Gokurakuji	<b>18</b> Onzanji	<b>17</b> Idoli	<b>32</b> Zenjibuji	<b>47</b> Yasakaji	<b>63</b> Kichijoji	<b>78</b> Goshoji	
<b>3</b> Konsenji	<b>19</b> Tatsueji	<b>20</b> Kakurinji	<b>33</b> Sekkeiji	<b>48</b> Sairinji	<b>64</b> Maegamiji	<b>79</b> Tennoji	
<b>4</b> Dainichiji	<b>21</b> Taiyuri	<b>22</b> Byodoji	<b>34</b> Tanemaji	<b>49</b> Jyodoji	<b>65</b> Sankakuji	<b>80</b> Kokubunji	
<b>5</b> Jizoji	<b>23</b> Yakuoji	<b>24</b> Iwamotoji	<b>35</b> Kiyotakaji	<b>50</b> Hantaji	<b>66</b> Unpenji	<b>81</b> Shiromineji	
<b>6</b> Anrakuji	<b>25</b> Gokurakuji	<b>26</b> Kongohukuji	<b>36</b> Shoryuji	<b>51</b> Ishiteji	<b>67</b> Taisanji	<b>82</b> Negoroji	
<b>7</b> Jurakuji	<b>27</b> Kounomineji	<b>28</b> Daihoji	<b>37</b> Enkoji	<b>52</b> Enmeiji	<b>68</b> Jinnein	<b>83</b> Ichinomiya	
<b>8</b> Kumadaniji	<b>29</b> Kōkubunji	<b>30</b> Zenrakuji	<b>38</b> Enkoji	<b>53</b> Enmyoji	<b>69</b> Kannonji	<b>84</b> Yashimaji	
<b>9</b> Horinji	<b>31</b> Chikurinji	<b>32</b> Zenjibuji	<b>39</b> Enkoji	<b>54</b> Enmeiji	<b>70</b> Motoyamaji	<b>85</b> Yakuriji	
<b>10</b> Kirihataji	<b>33</b> Sekkeiji	<b>34</b> Tanemaji	<b>40</b> Kanjizaiji	<b>55</b> Nankobō	<b>71</b> Iyadani	<b>86</b> Shidoji	
<b>11</b> Fujidera	<b>35</b> Kiyotakaji	<b>36</b> Shoryuji	<b>41</b> Ryukoji	<b>56</b> Taisanji	<b>72</b> Mandaraji	<b>87</b> Nagaoji	
<b>12</b> Shozanji	<b>37</b> Enkoji	<b>38</b> Kongohukuji	<b>42</b> Butsumokuji	<b>57</b> Eifukuji	<b>73</b> Shushakaji	<b>88</b> Okuboji	
<b>13</b> Dainichiji	<b>39</b> Enkoji	<b>40</b> Kanjizaiji	<b>43</b> Meisekiji	<b>58</b> Senyuji	<b>74</b> Koyamaji		
<b>14</b> Jorakuji	<b>41</b> Ryukoji	<b>42</b> Butsumokuji	<b>44</b> Daihoji	<b>59</b> Kokubunji	<b>75</b> Zentsuji		
<b>15</b> Kokubunji	<b>43</b> Meisekiji	<b>44</b> Daihoji	<b>45</b> Iwayaji	<b>60</b> Yokomineji	<b>76</b> Konzoji		
	<b>45</b> Iwayaji	<b>46</b> Jyoruriji		<b>61</b> Koonji			

<https://88shikokuenro.jp/en/>

